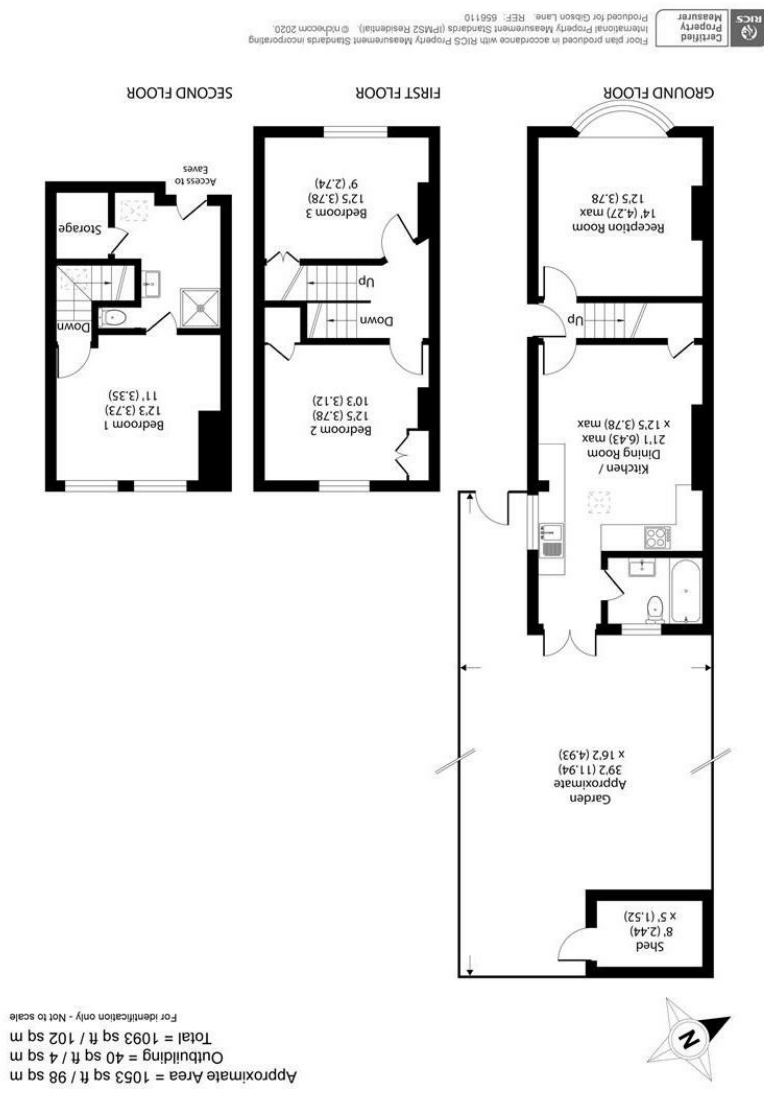


All appliances listed in these details are only 'as seen' and have not been tested by Gibson Lane, nor have we sought certification of warranty or service, unless otherwise stated. Measurements, areas and distances are approximate. Floor plans and photographs are for guidance purposes only and must not be relied upon for any purpose. These details are offered on the understanding that all negotiations are made through this company. Neither these particulars, nor verbal representations, form part of any offer or contract, and their accuracy cannot be guaranteed.

England & Wales	
Energy Efficiency Rating	B
Environmental Impact (CO <sub>2</sub> ) Rating	C



34 Richmond Road  
 Kingston upon Thames  
 Surrey  
 KT2 6ED  
 www.gibsonlane.co.uk  
 Tel: 020 8546 5444



Elm Road  
 Kingston Upon Thames KT2 6HP



## Elm Road

Kingston Upon Thames KT2 6HP

Asking Price £725,000

An attractive brick fronted semi detached Victorian house situated on this sought after road in North Kingston.

### Description

An attractive brick fronted semi detached Victorian house situated on this sought after road in North Kingston. The property is well presented internally with accommodation approaching 1100 sq ft arranged over three floors. On the ground floor there is a lovely front reception room with exposed brick fire place, leading onto an open plan kitchen/dining room with family bathroom at the rear. To the upper floors there are three double bedrooms with the master and en suite shower in the loft. Externally there is a delightfully landscaped private rear garden.

### Situation

Elm Road is a popular residential road ideally situated in the sought after North Kingston area. The property is conveniently positioned for Richmond Park, the River Thames, Kingston and Norbiton stations giving direct access into Waterloo and the A3 which serves both London & the M25. Kingston town centre with its array of shops and restaurants is a short distance away. The standard of schooling in the immediate area is excellent within both the private and state sector.

**Tenure:** Freehold  
**Local Authority:**

